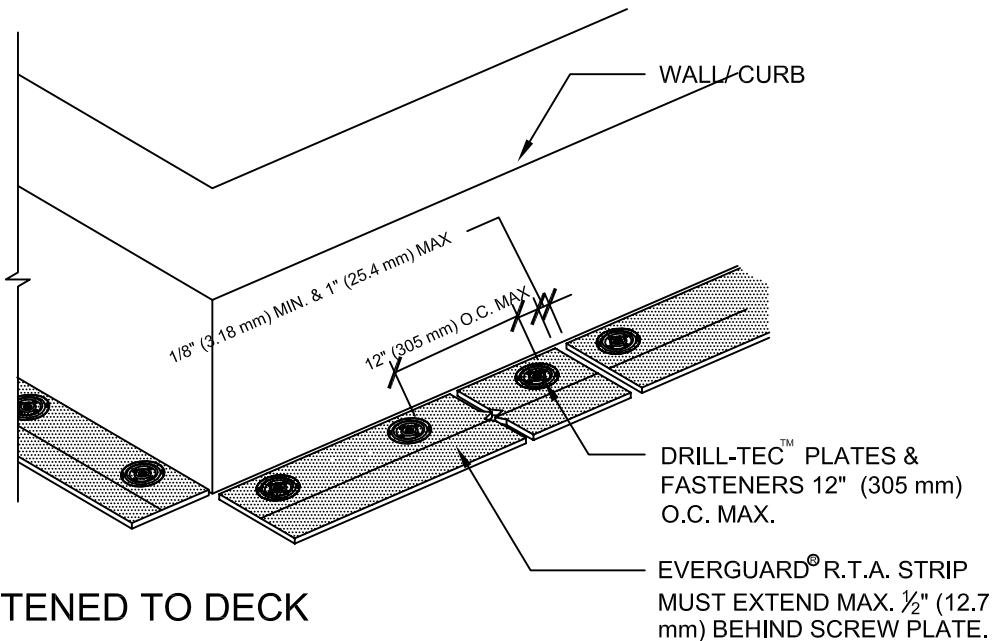
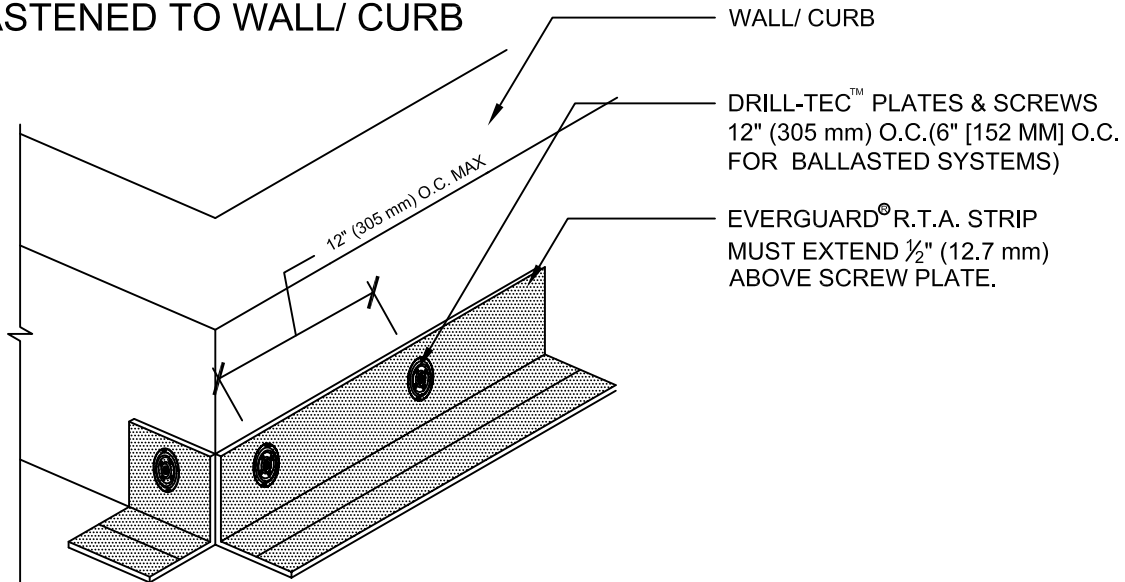


FASTENED TO WALL/ CURB



FASTENED TO DECK

NOTE:

1. THIS DETAIL IS NOT TO BE USED FOR EVERGUARD® PVC MEMBRANES OR MECHANICALLY ATTACHED SYSTEMS.
2. R.T.A STRIP MAY BE FIELD FABRICATED OUT OF EVERGUARD® FREEDOM™ MEMBRANE.
3. IF EVERGUARD® FREEDOM™ MEMBRANE IS USED, BONDING ADHESIVE IS NOT NEEDED AND WALL MUST BE PRIMED.
4. FOR INSULATION THICKNESS GREATER THAN 8" (203 mm), A HARD BOARD IS REQUIRED ON MECHANICAL SYSTEMS ONLY.
5. APPLY EVERGUARD® TPO CUT EDGE SEALANT TO ALL CUT REINFORCED TPO EDGES (REFER TO EVERGUARD® DETAIL 115).



www.gaf.com
1 Campus Drive,
Parlisspany, NJ 07054

EverGuard
SINGLE-PLY ROOFING SYSTEMS
PARAPET WALL &
CURB SERIES

DRAWING #
326B

SCALE
N.T.S.

**R.T.A. STRIP - OUTSIDE CORNER
REINFORCEMENT DETAIL**

TPO ONLY

THIS DETAIL APPLIES TO:
Adhered Systems
Self - Adhered Systems
Ballasted Systems
Non Fleece

REVISION DATE
6-20-16