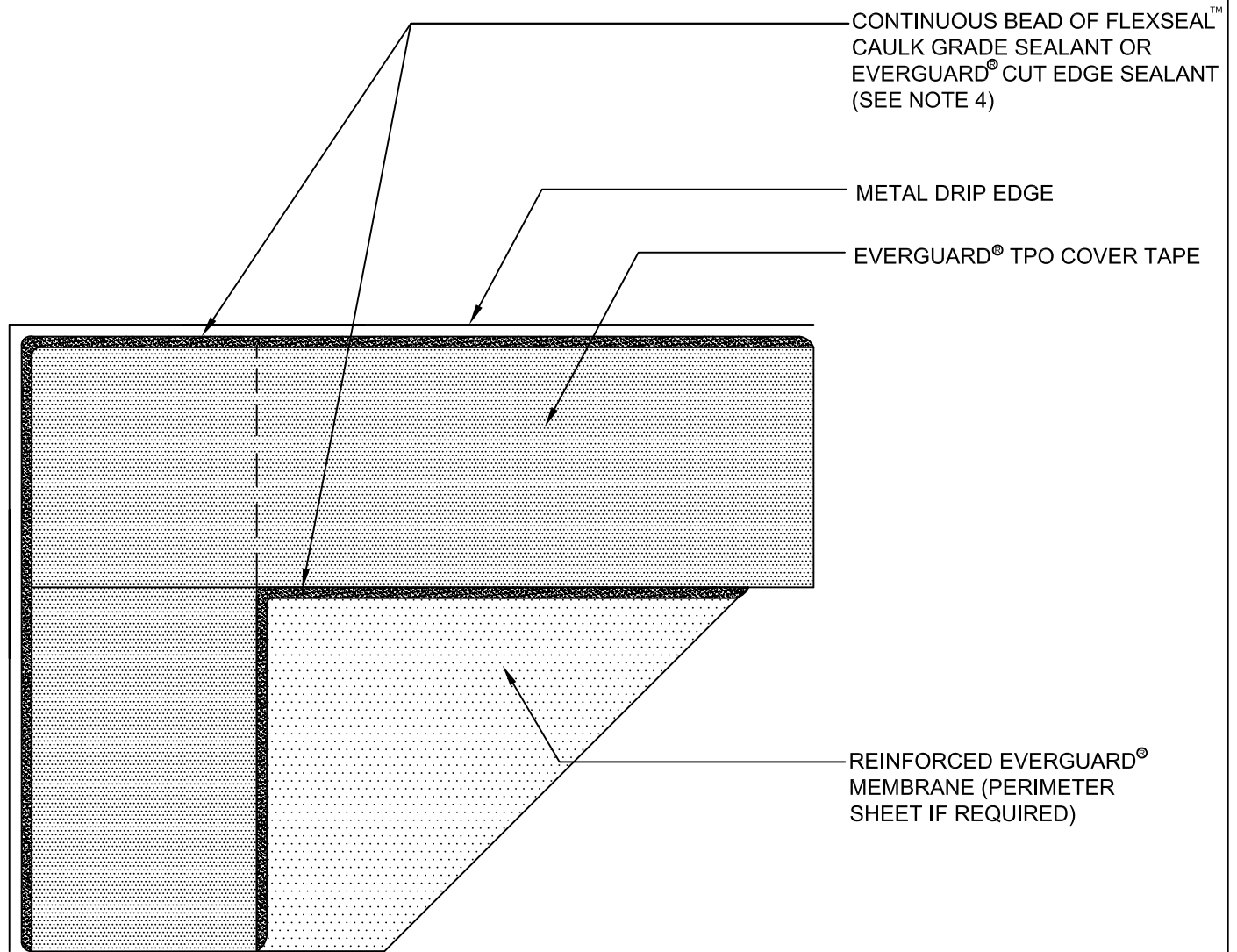


**20-YEAR MAX
WARRANTY**

TPO ONLY



NOTE:

1. CLEAN METAL AND MEMBRANE WITH EVERGUARD® TPO SEAM CLEANER AND ALLOW TO DRY BEFORE PRIMING.
2. PRIME MEMBRANE AND METAL EDGE BEFORE INSTALLING EVERGUARD TPO COVER TAPE
3. APPLY EVERGUARD® TPO CUT EDGE SEALANT TO ALL CUT REINFORCED TPO EDGES (REFER TO EVERGUARD® DETAIL 115).
4. FLEXSEAL™ CAULK GRADE SEALANT SHOULD BE FEATHERED OUT. ENSURE PRIMER EXTENDS UNDER FLEXSEAL™ CAULK GRADE SEALANT.
5. THIS DETAIL IS **NOT** TO BE USED ON SLOPES GREATER THAN 1:12. FOR SLOPES GREATER THAN 1:12, REFER TO EVERGUARD DETAIL 218 OR 219 .



www.gaf.com
1 Campus Drive,
Parsippany, NJ 07054

EverGuard
SINGLE-PLY ROOFING SYSTEMS
ROOF EDGE SERIES

DRAWING #
216B

SCALE
N.T.S.

COVER TAPE AT ROOF EDGE CORNER DETAIL

THIS DETAIL APPLIES TO:
Adhered Systems
Mechanically Attached Systems
Self - Adhered Systems
TriPosite Systems

REVISION DATE
8-16-17