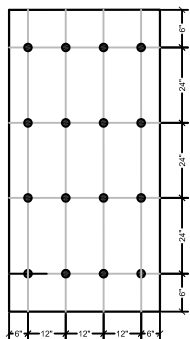
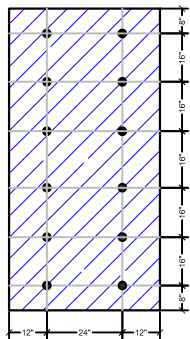


(A) CORNER



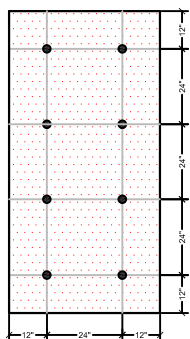
16 FASTENERS PER BOARD

(B) PERIMETER





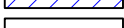
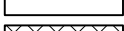
12 FASTENERS PER BOARD

(C) FIELD



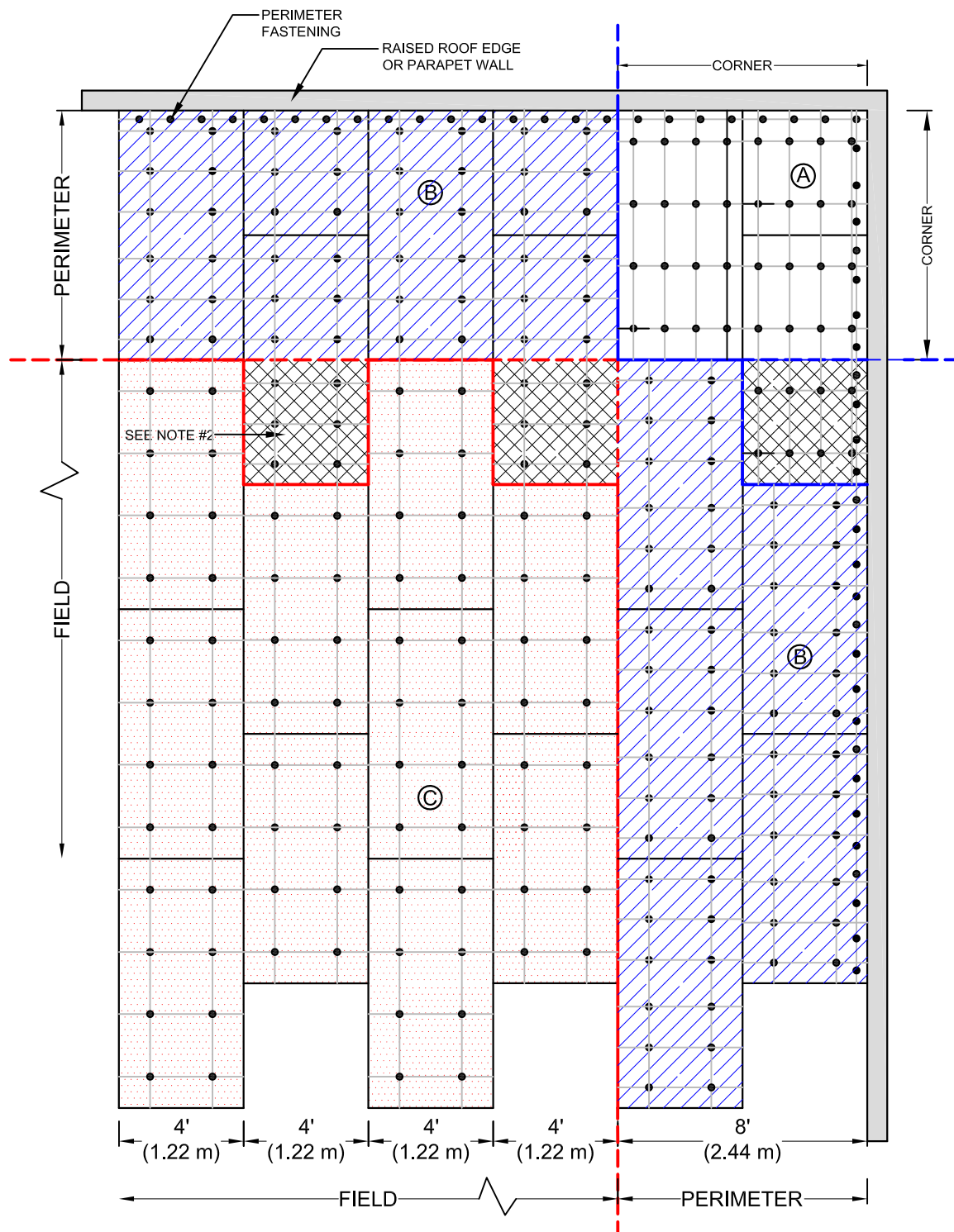
8 FASTENERS PER BOARD

ZONE LEGEND

-  FIELD
-  PERIMETER
-  CORNER
-  TRANSITION

NOTE:

1. SEE EVERGUARD® SYSTEM GUIDELINES IN SPEC MANUAL TO DETERMINE PERIMETER AND PENETRATION FASTENER SPACING FOR VARIOUS DECK TYPES AND WIND UPLIFT REQUIREMENTS.
2. IF A PORTION OF A BOARD EXTENDS INTO ANOTHER ZONE, IT MUST DEFER TO THE ZONE THE GREATER FASTENING PATTERN.



EverGuard
SINGLE-PLY ROOFING SYSTEMS
FIELD OF ROOF SERIES

DRAWING #
108

RHINO BOND FASTENING ZONES & LOCATIONS

THIS DETAIL APPLIES TO:
RHINO BOND® ATTACHMENT SYSTEMS

1 Campus Drive
Parsippany, NJ 07054
www.gaf.com

SCALE
N.T.S.

OVER APPROVED WOOD DECKS

REVISION DATE
2-19-16